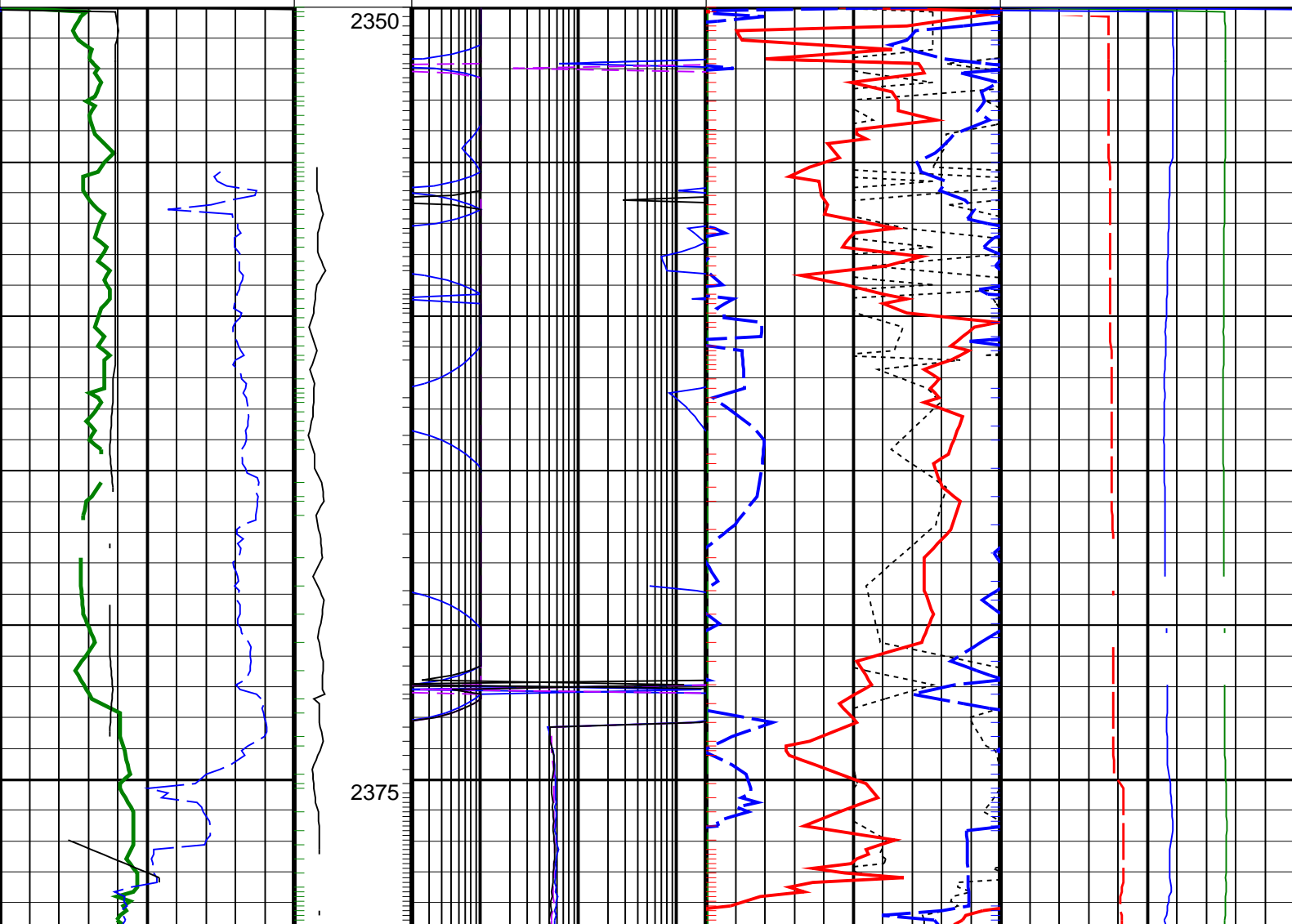
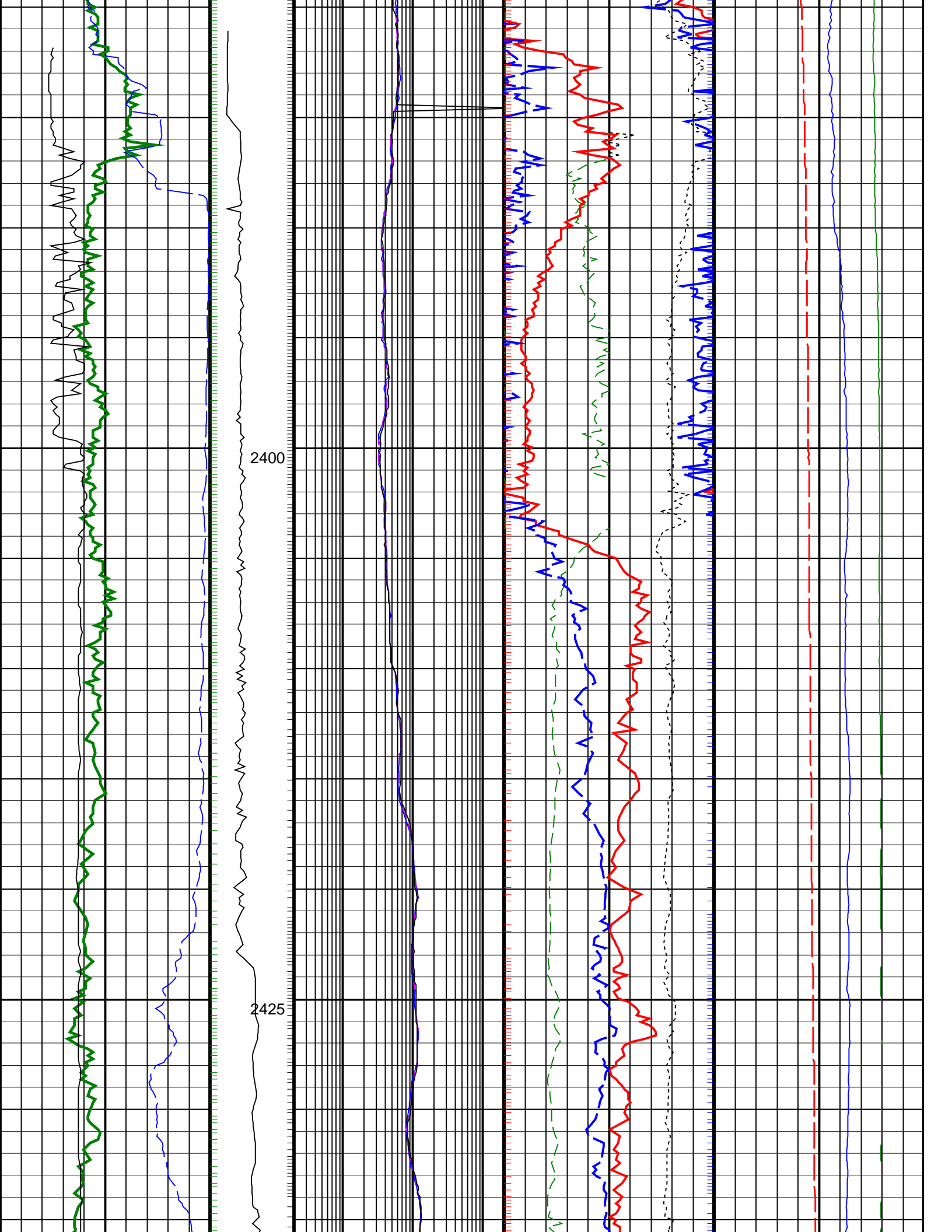


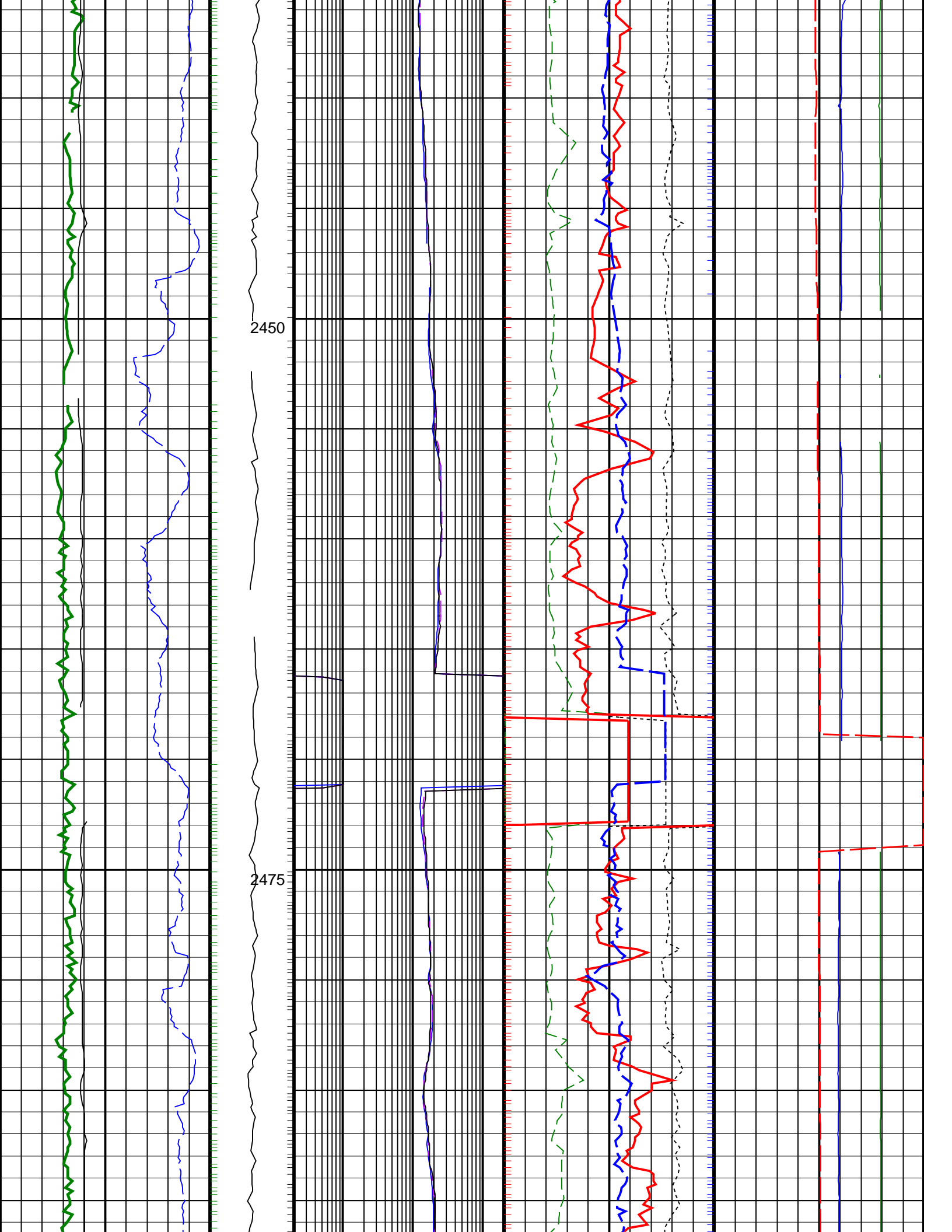
PIP SUMMARY

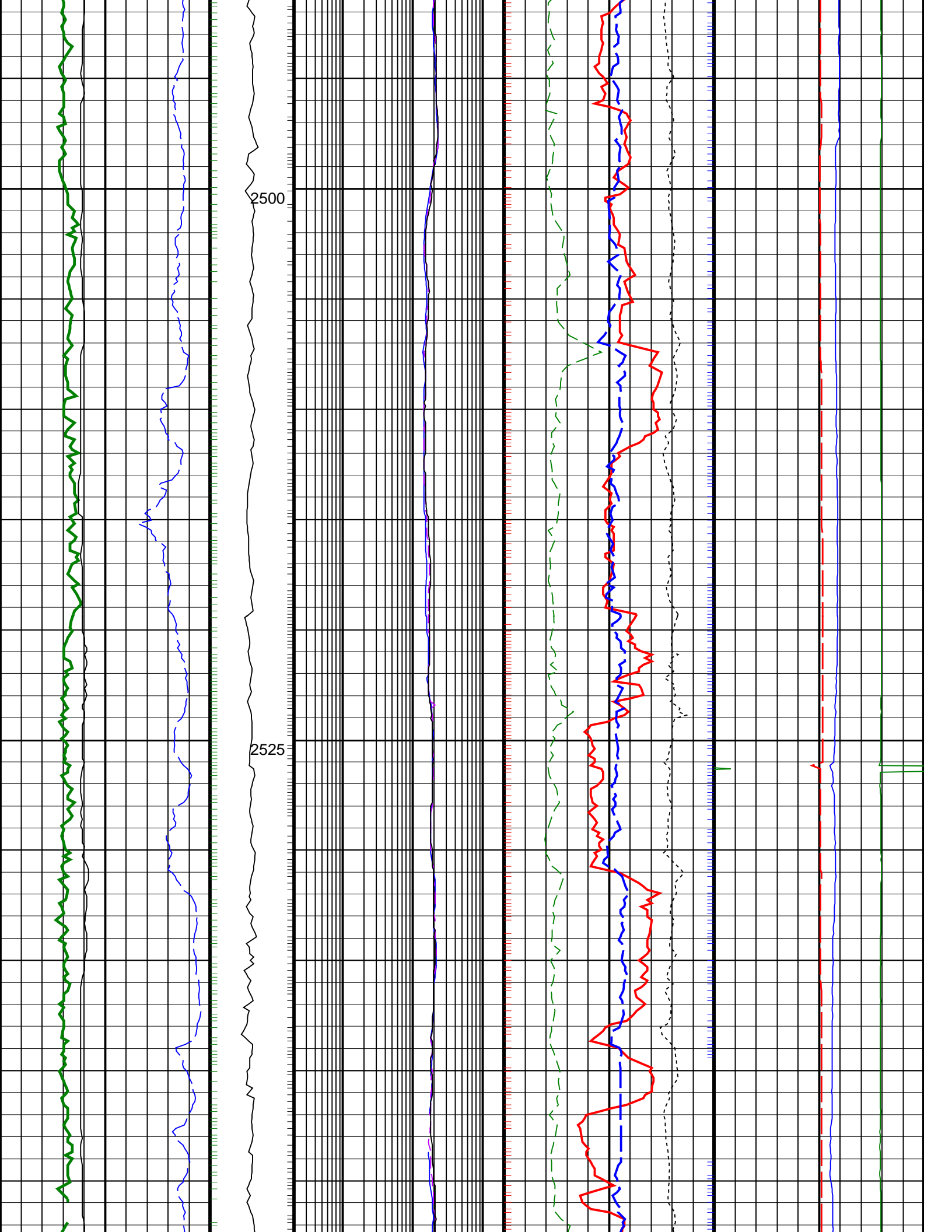
Density Samples +
 Gamma Ray Samples
 Resistivity Samples
 Neutron Samples +

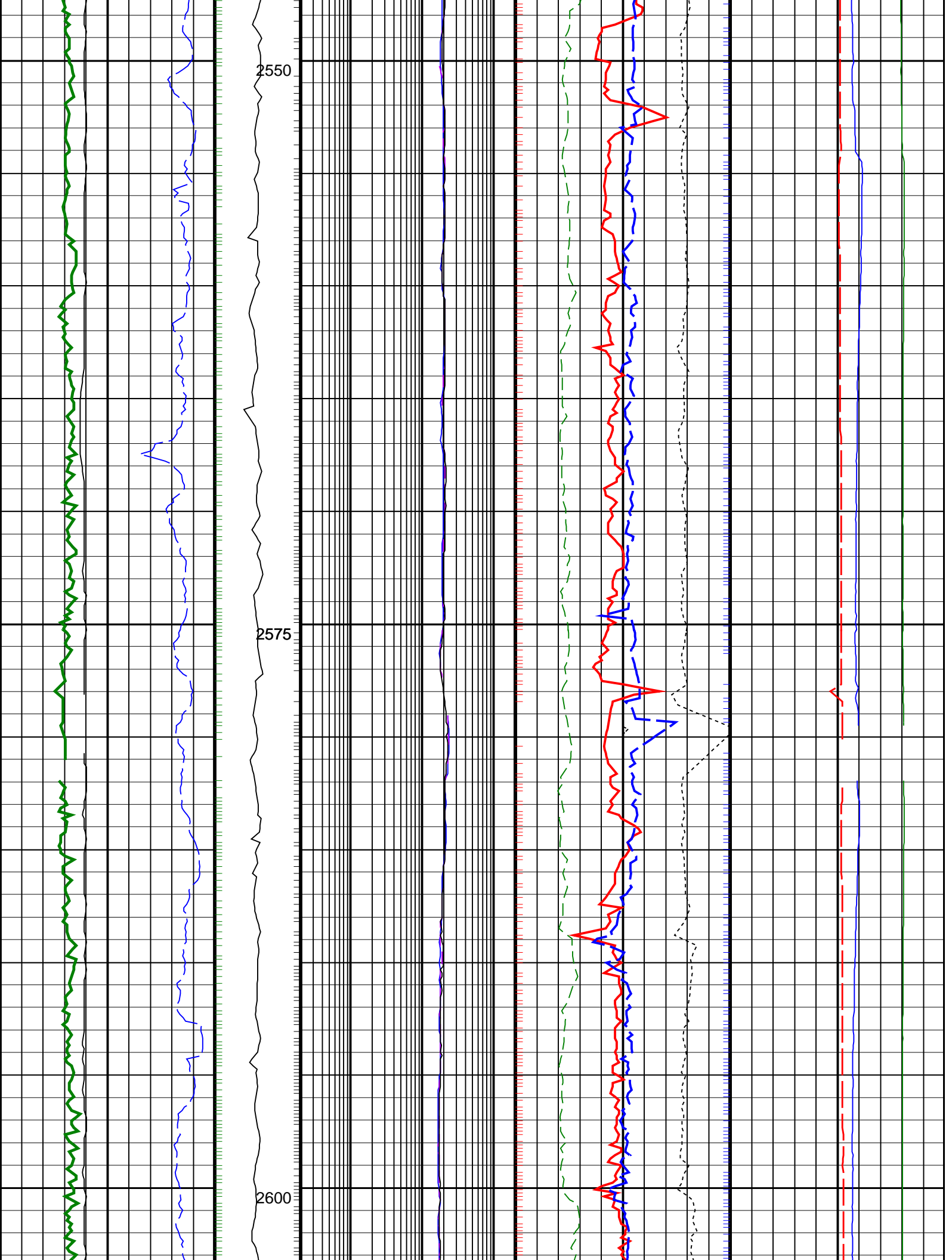
Gamma Ray, Average, Real-Time, Computed Downhole (GRMA_DH_ECO_RT) (GAPI)	ARC Phase Shift Resistivity 40 inch at 2 MHz, Real-Time (P40H_ECO_RT) (OHMM)	Thermal Neutron Porosity, Average, Real-Time (TNPH_ECO_RT) (PU)	Equivalent Circulating Density, Real-Time (ECD_ECO_RT) (LB/G)
0 200	0.2 200	45 -15	10 15
Ultrasonic Caliper, Average Diameter, Real-Time, Computed Downhole (UCAV_DH_ECO_RT) (IN)	ARC Phase Shift Resistivity 28 inch at 2 MHz, Real-Time (P28H_ECO_RT) (OHMM)	Photoelectric Factor, Bottom, Real-Time, Computed Downhole (PEB_DH_ECO_RT) (G/C3)	Bulk Density Correction, Bottom, Real-Time Computed Downhole (DRHB_DH_ECO_RT) (G/C3)
6 16	0.2 200	0 10	-0.25 0.25
ROP*5 (ROP5) (M/HR)	MWD Collar RPM (CRPM_RT) (RPM)	ARC Phase Shift Resistivity 16 inch at 2 MHz, Real-Time (P16H_ECO_RT) (OHMM)	Bulk Density, Bottom, Real-Time, Computed Downhole (ROBB_DH_ECO_RT) (G/C3)
200 0	0 400	0.2 200	1.85 2.85
			Downhole Annulus Temperature, Real Time, Computed Downhole (DHAT_DH_ECO_RT) (DEGC)
			0 200

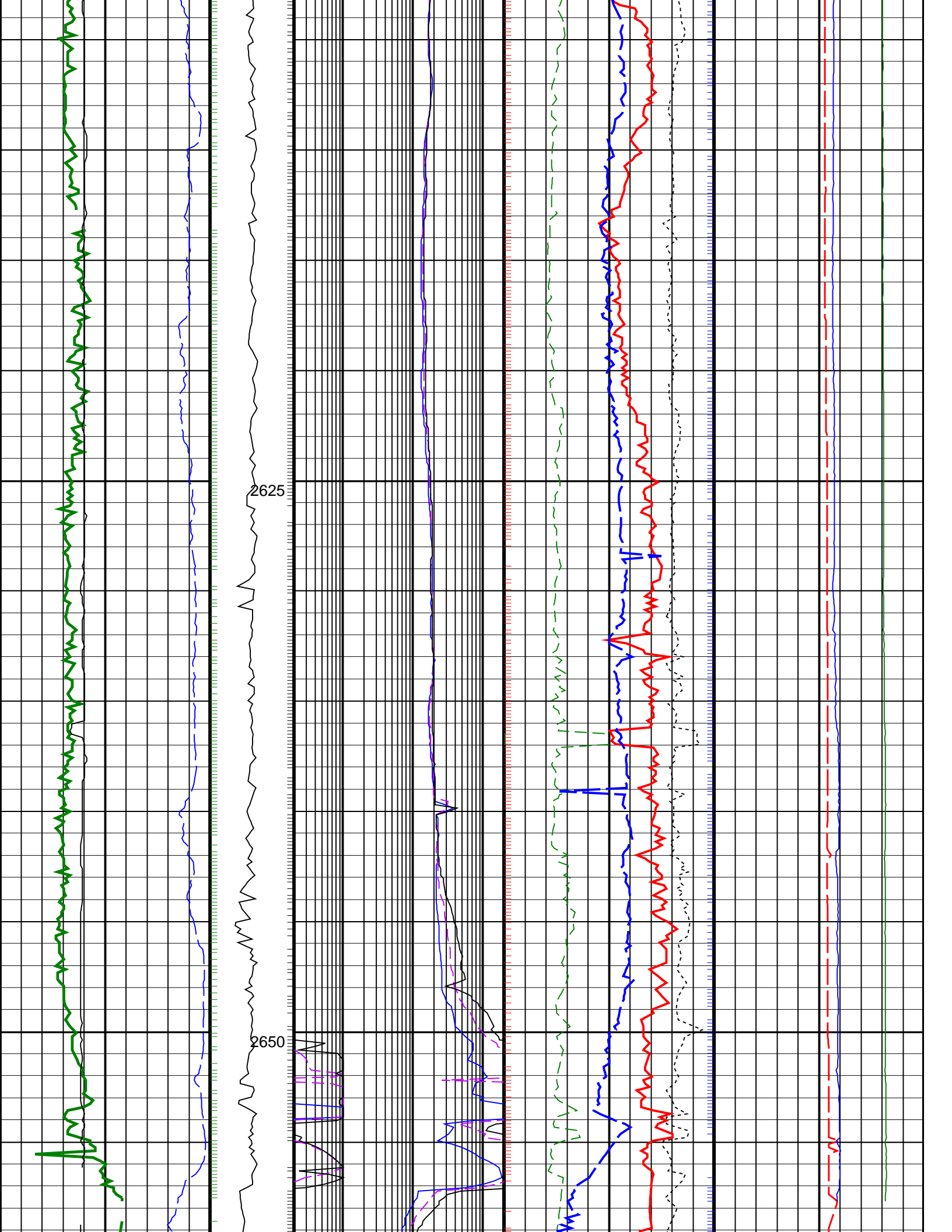


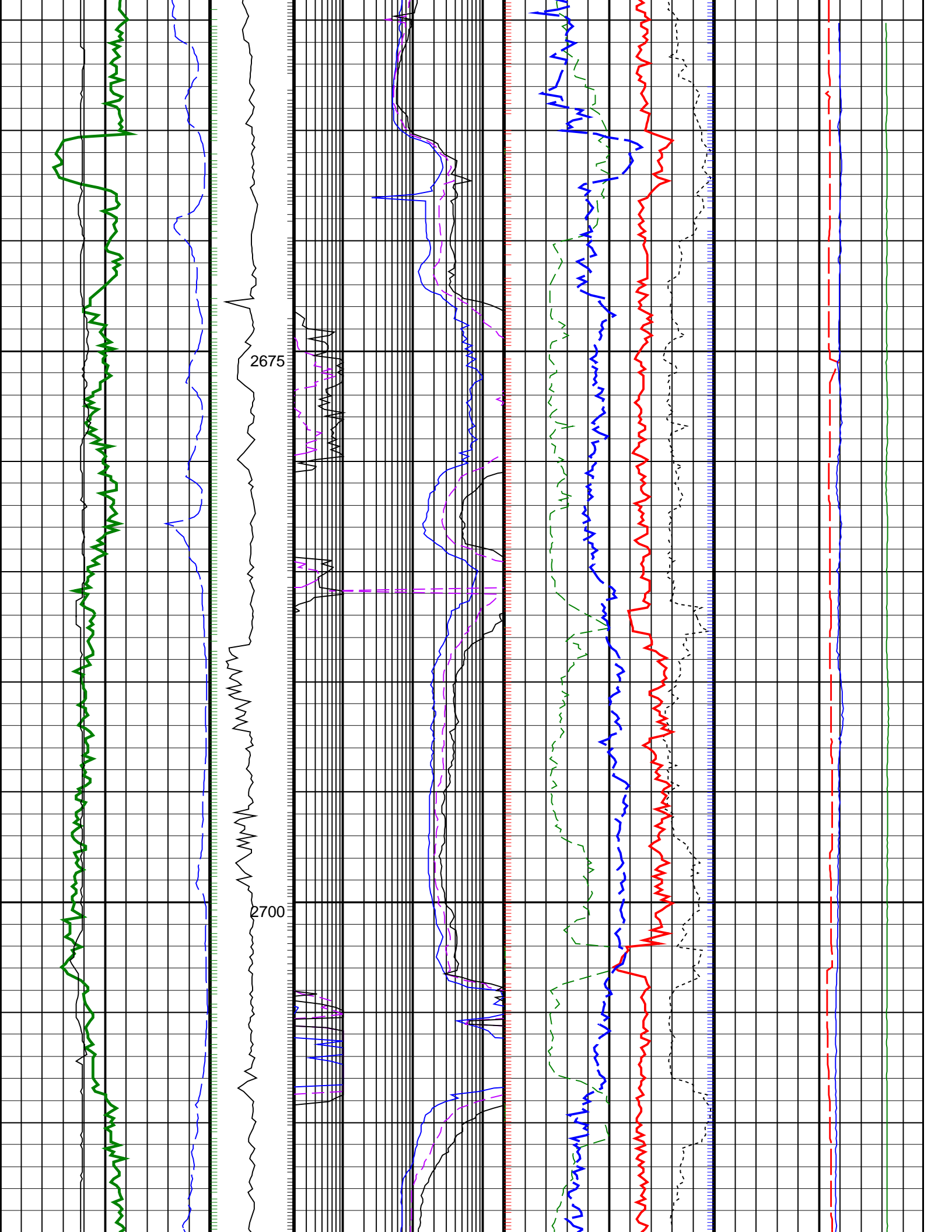


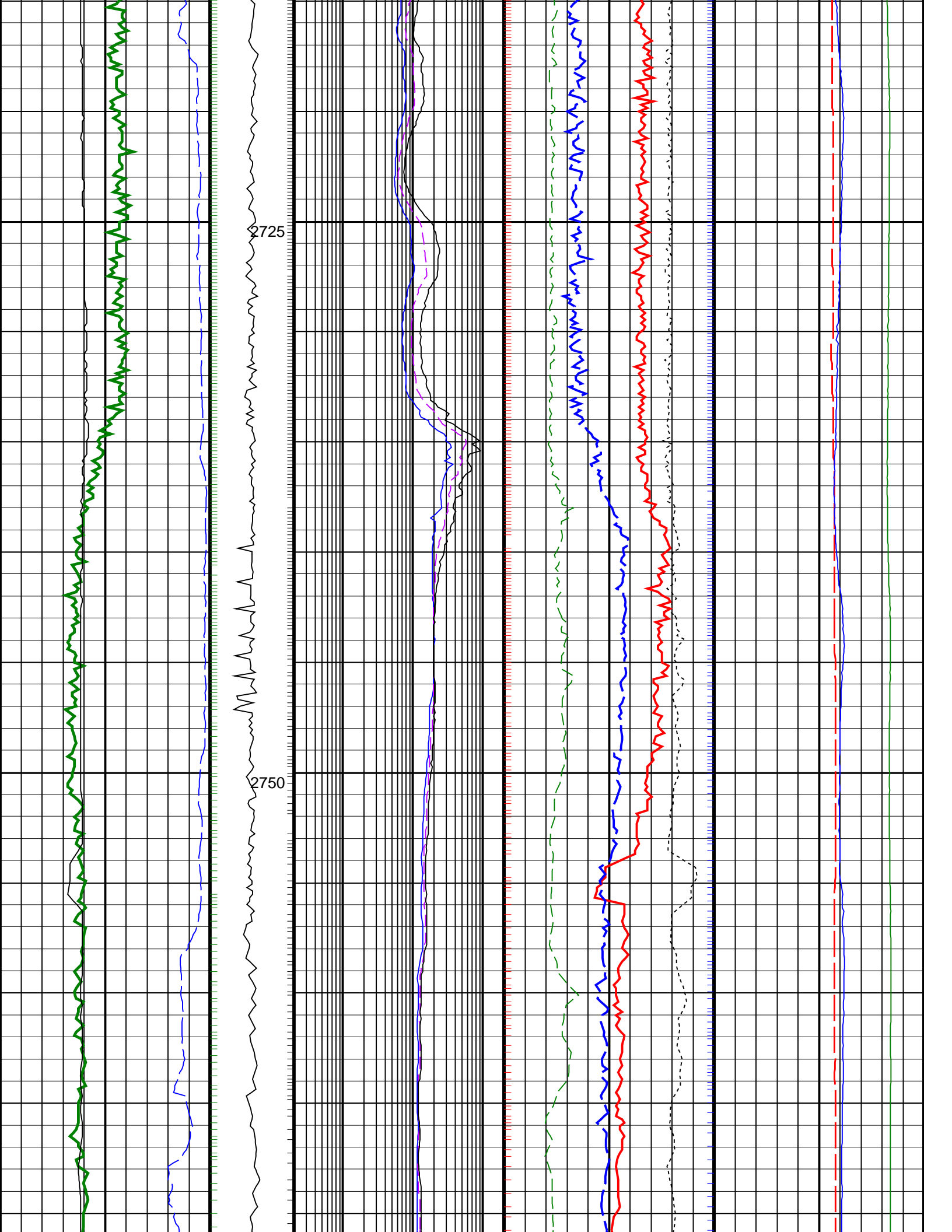


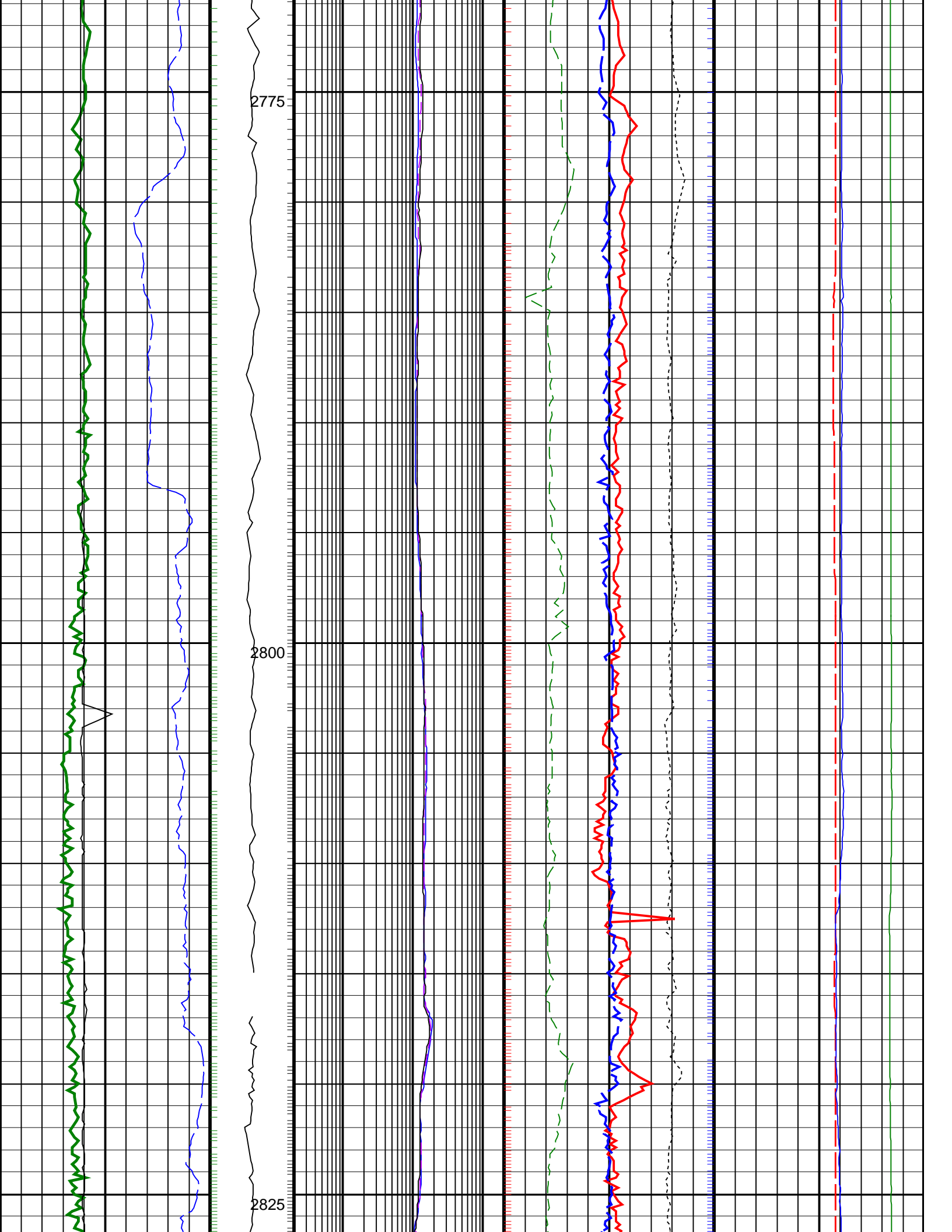


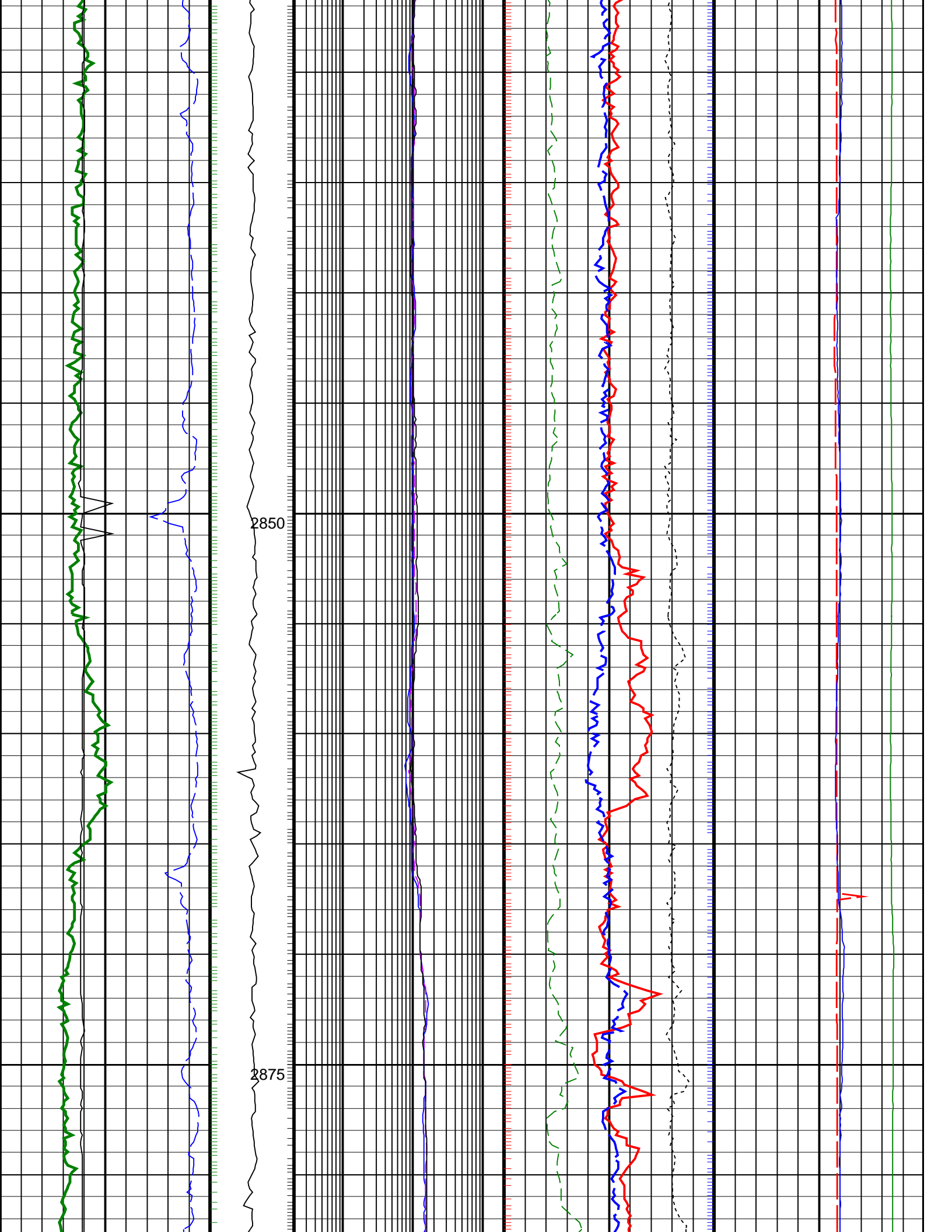


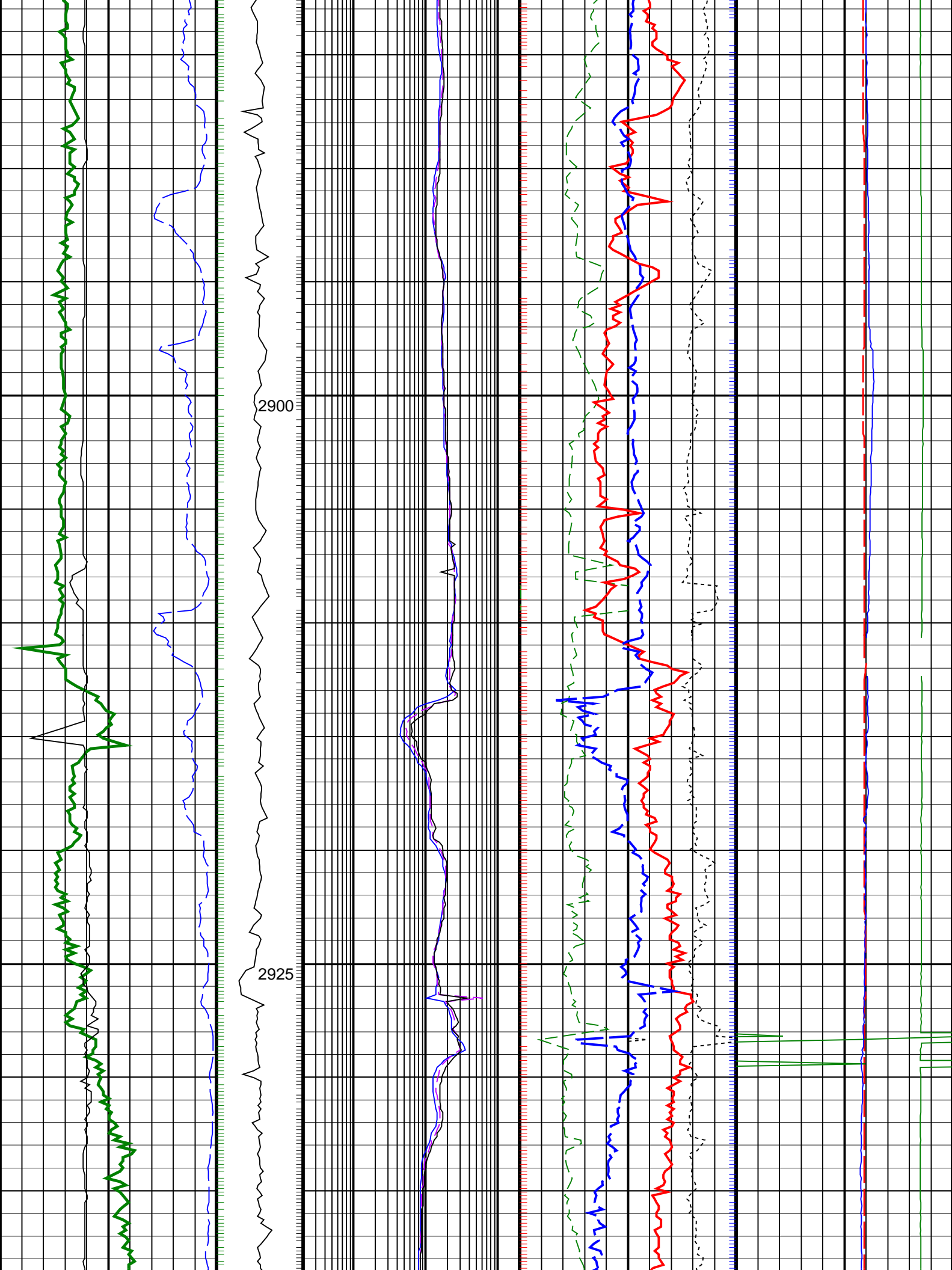


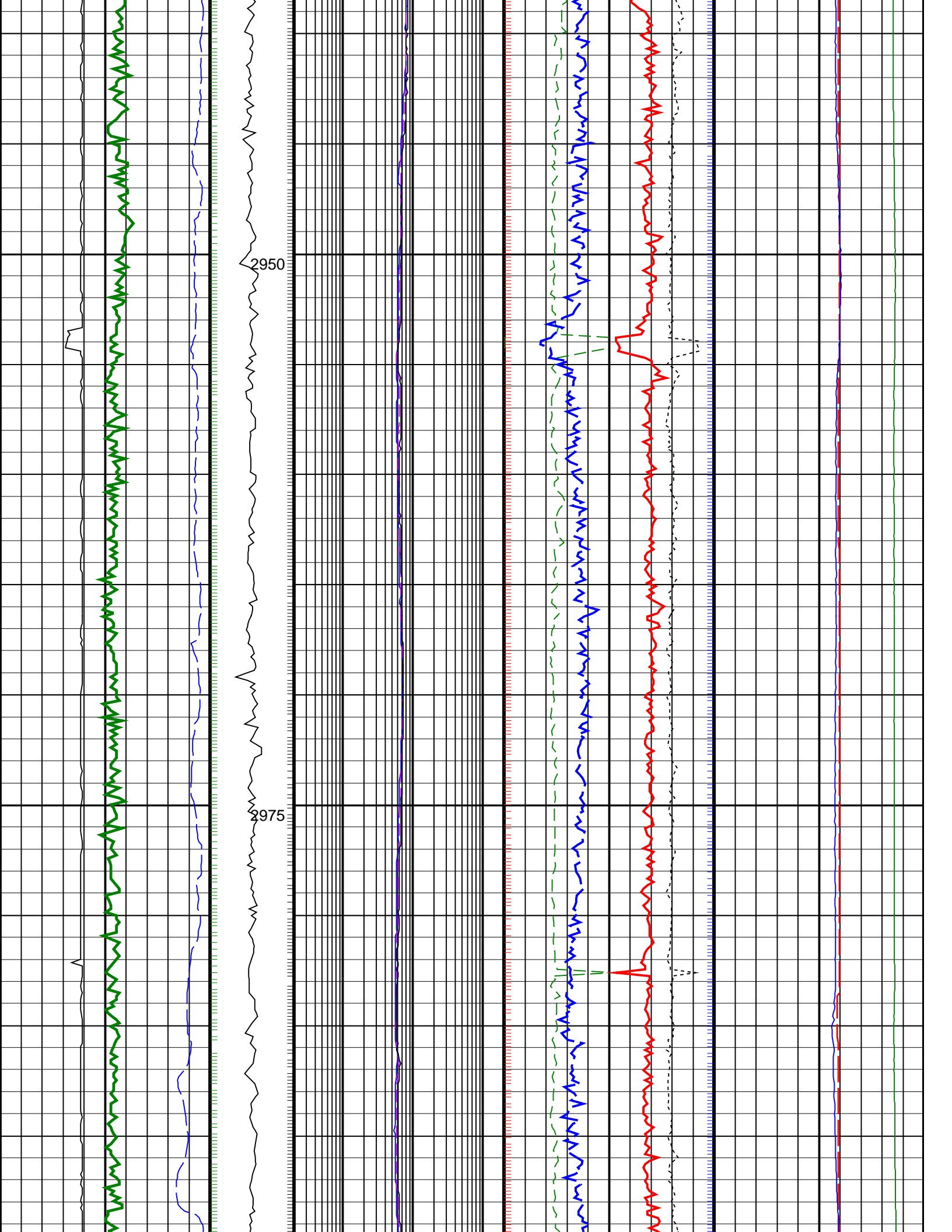


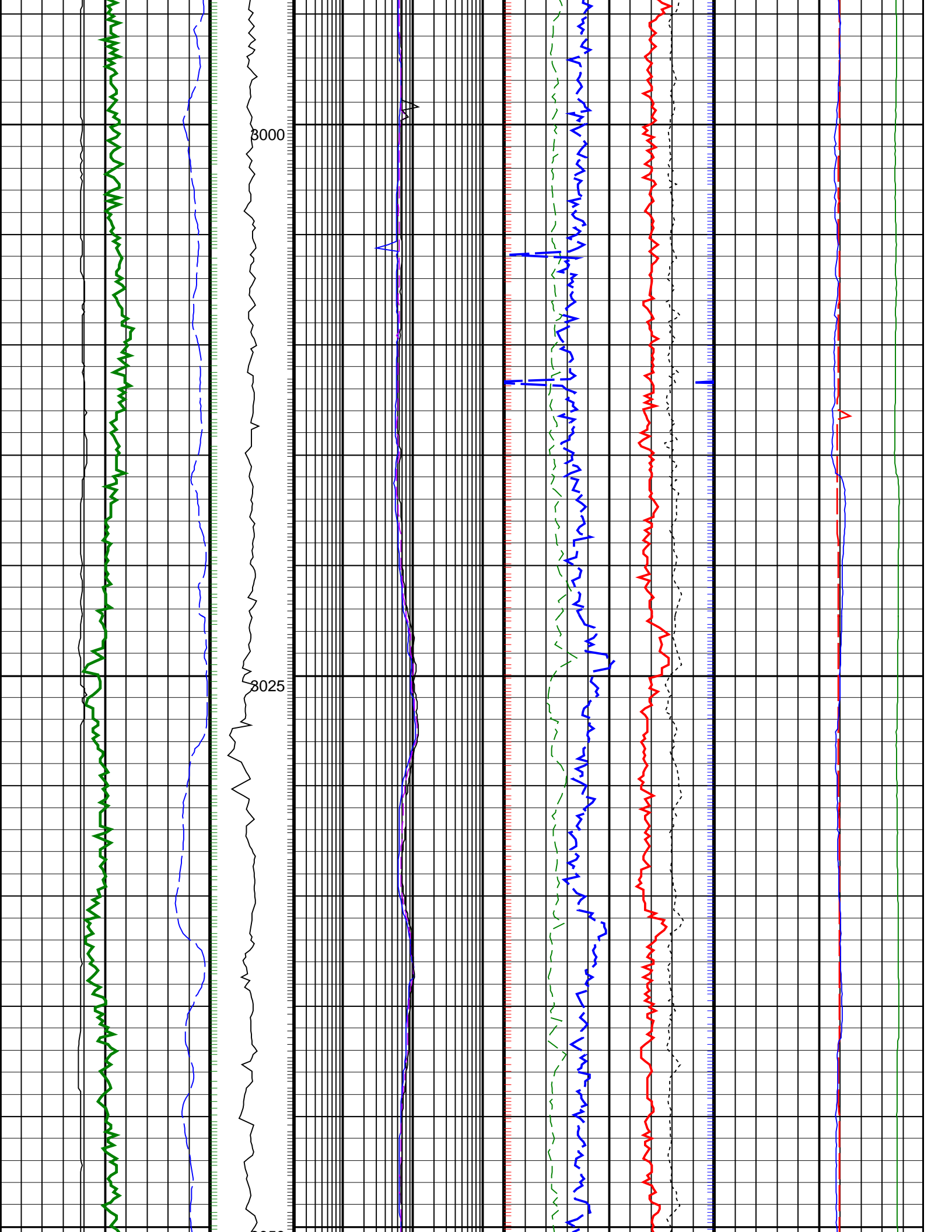


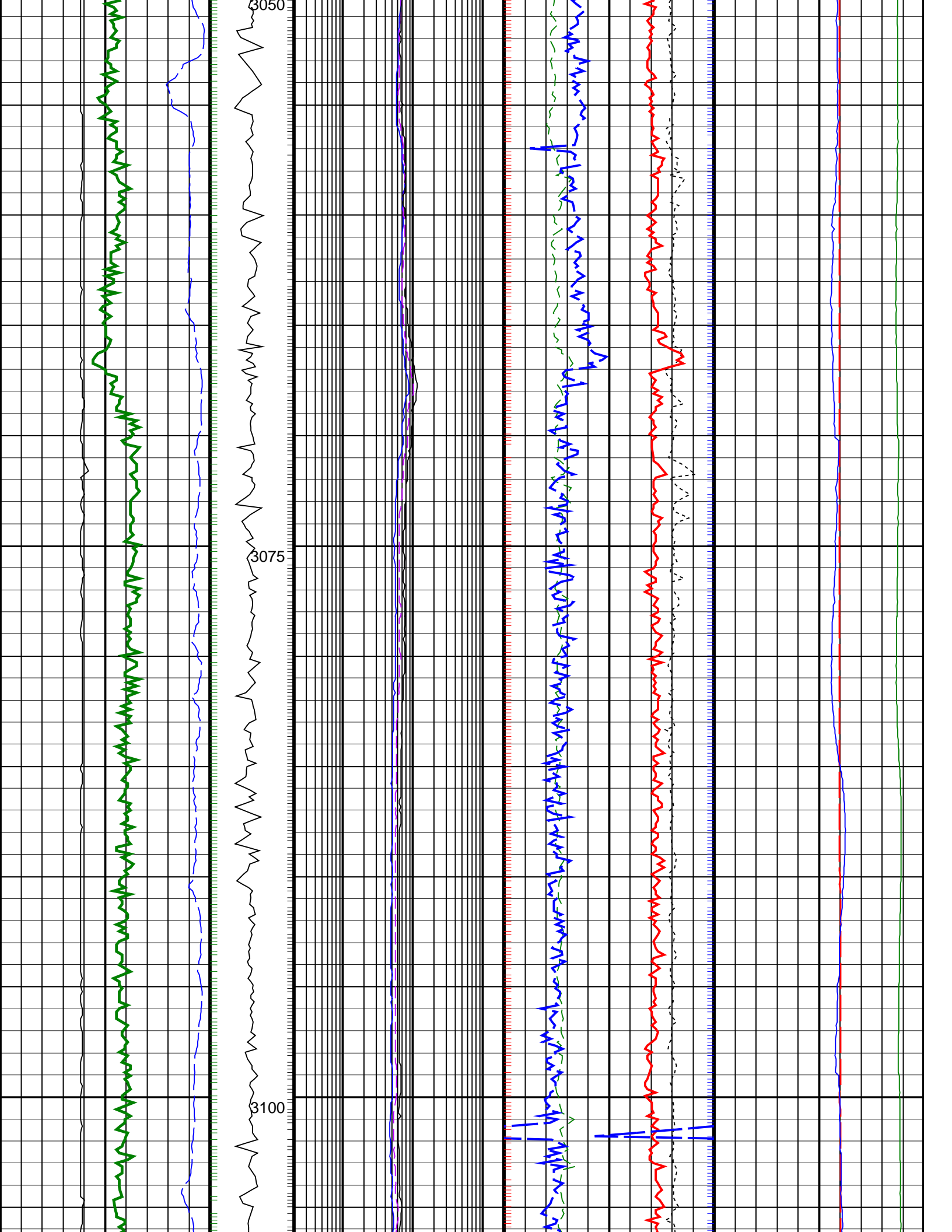


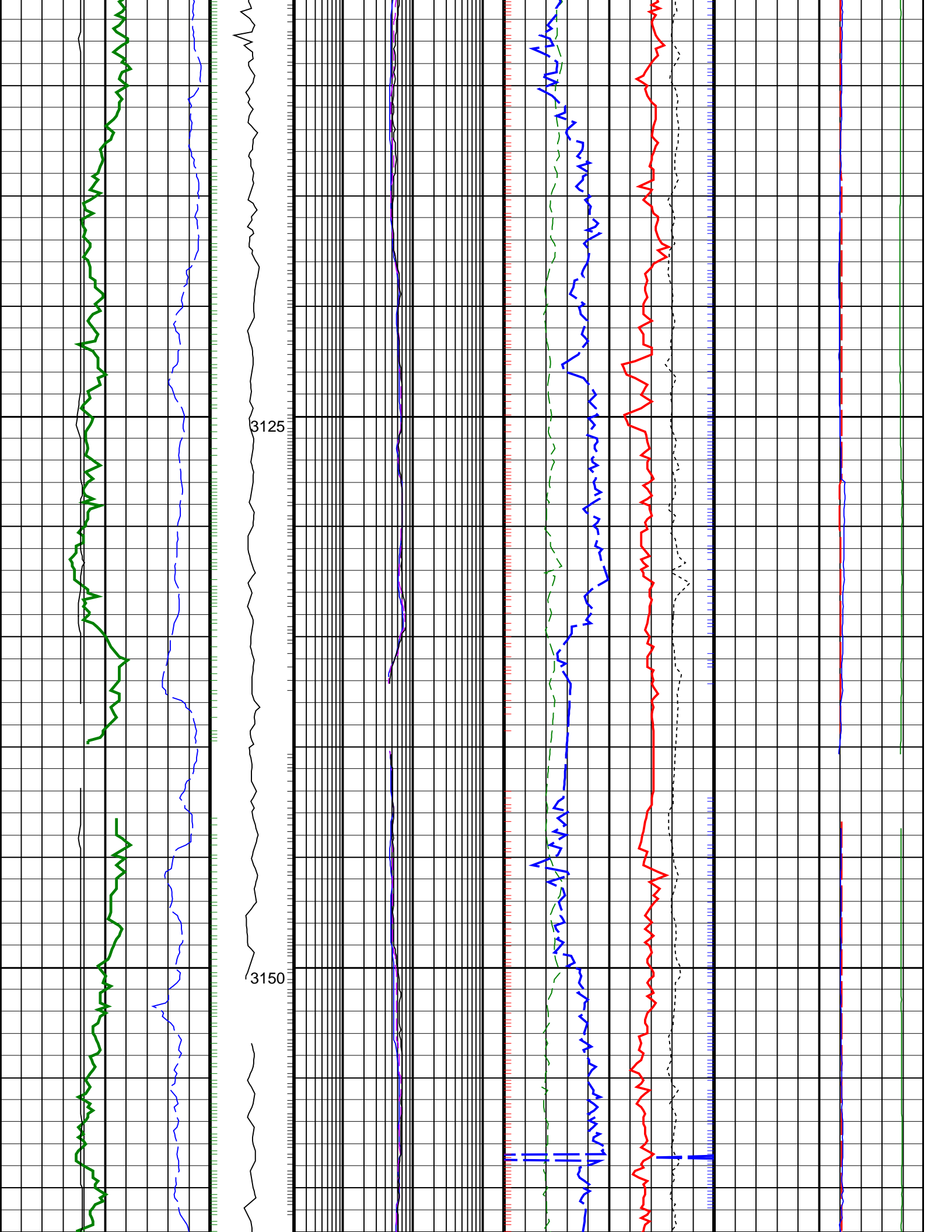


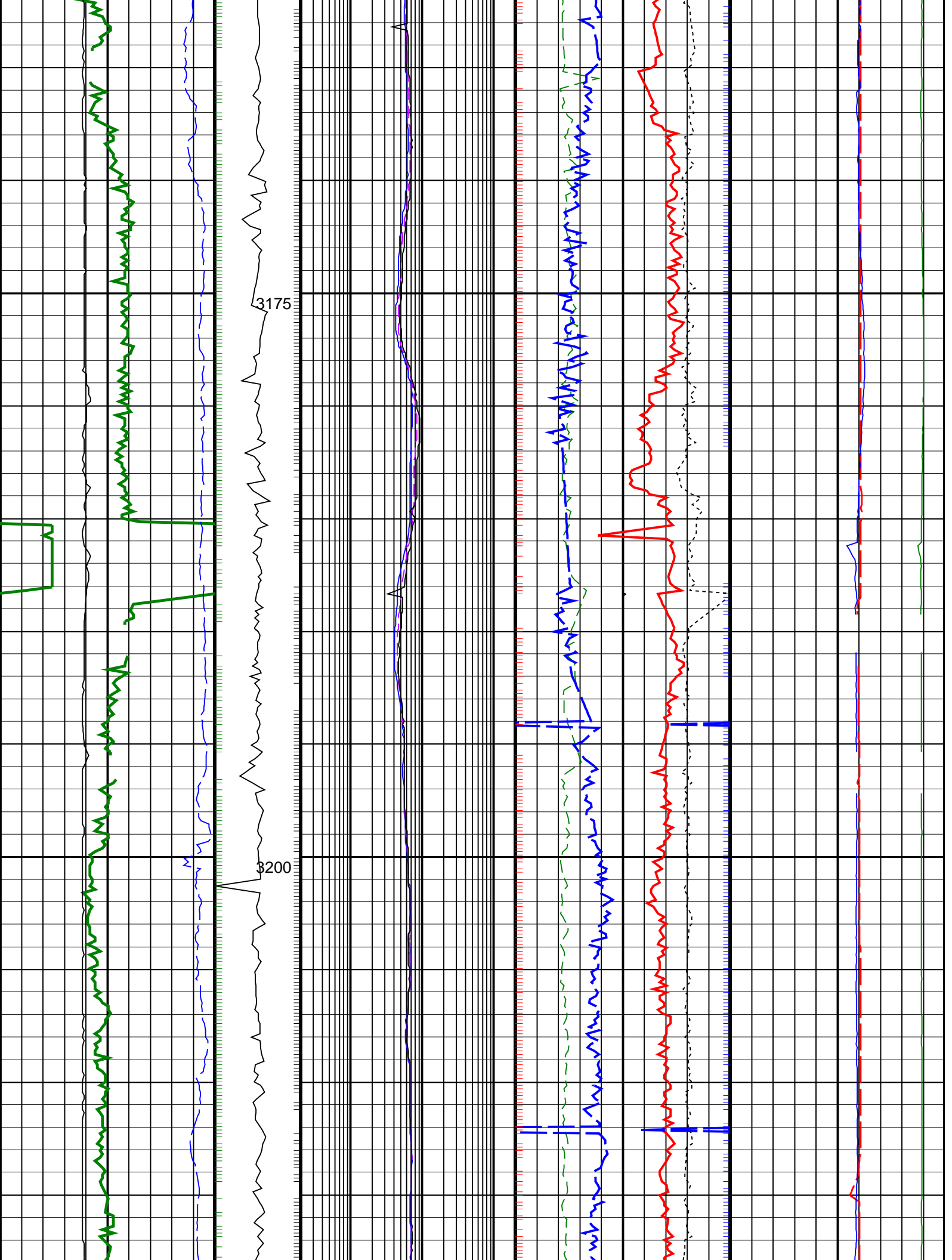


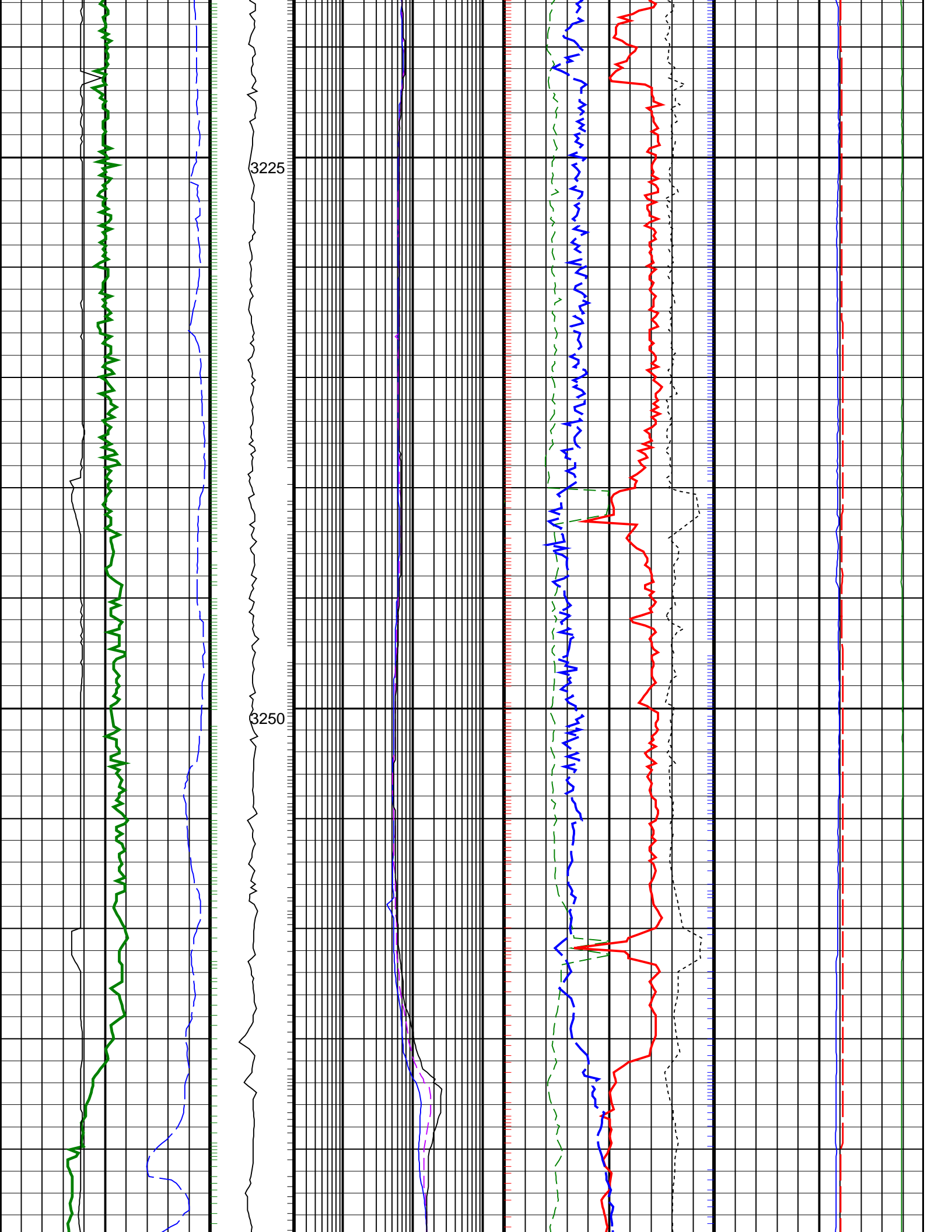


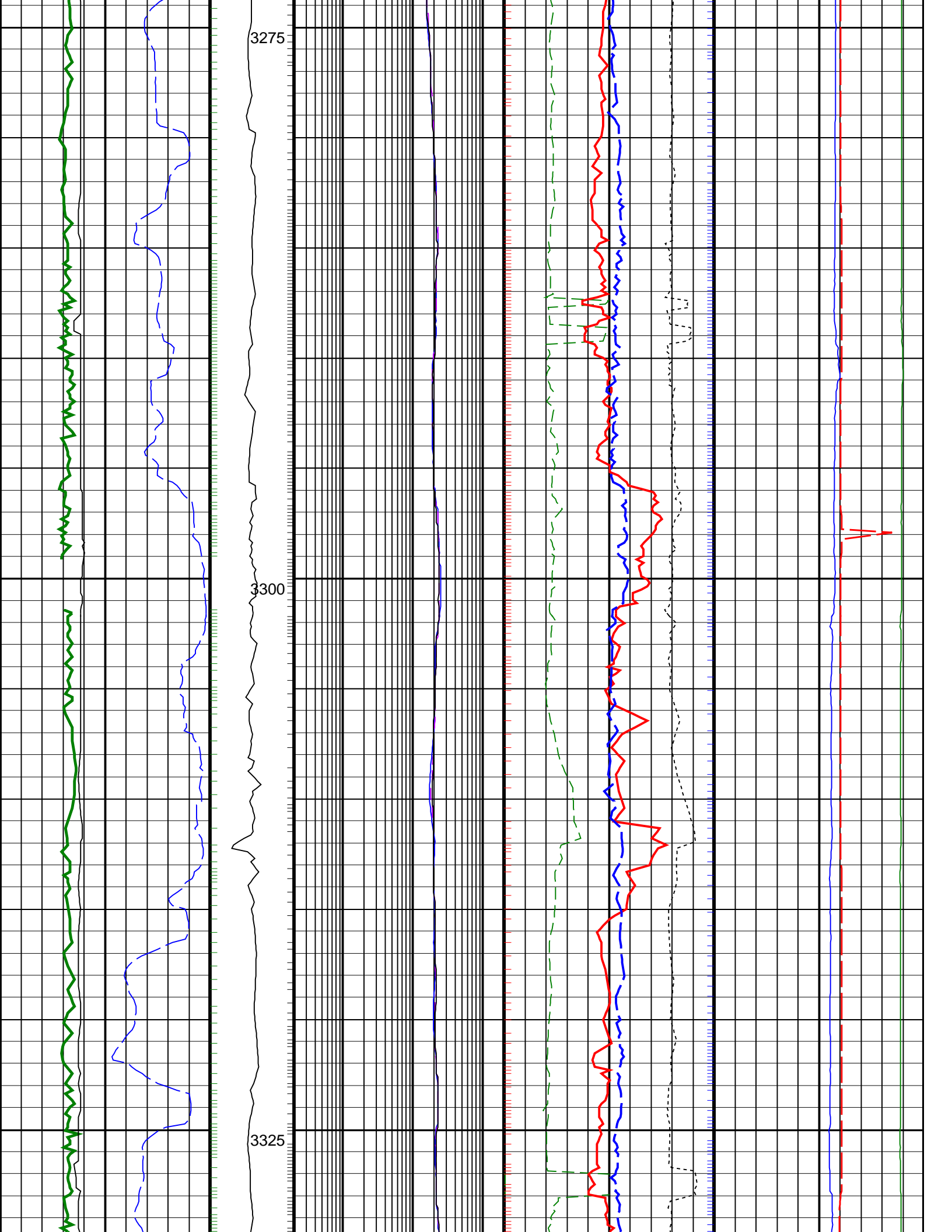


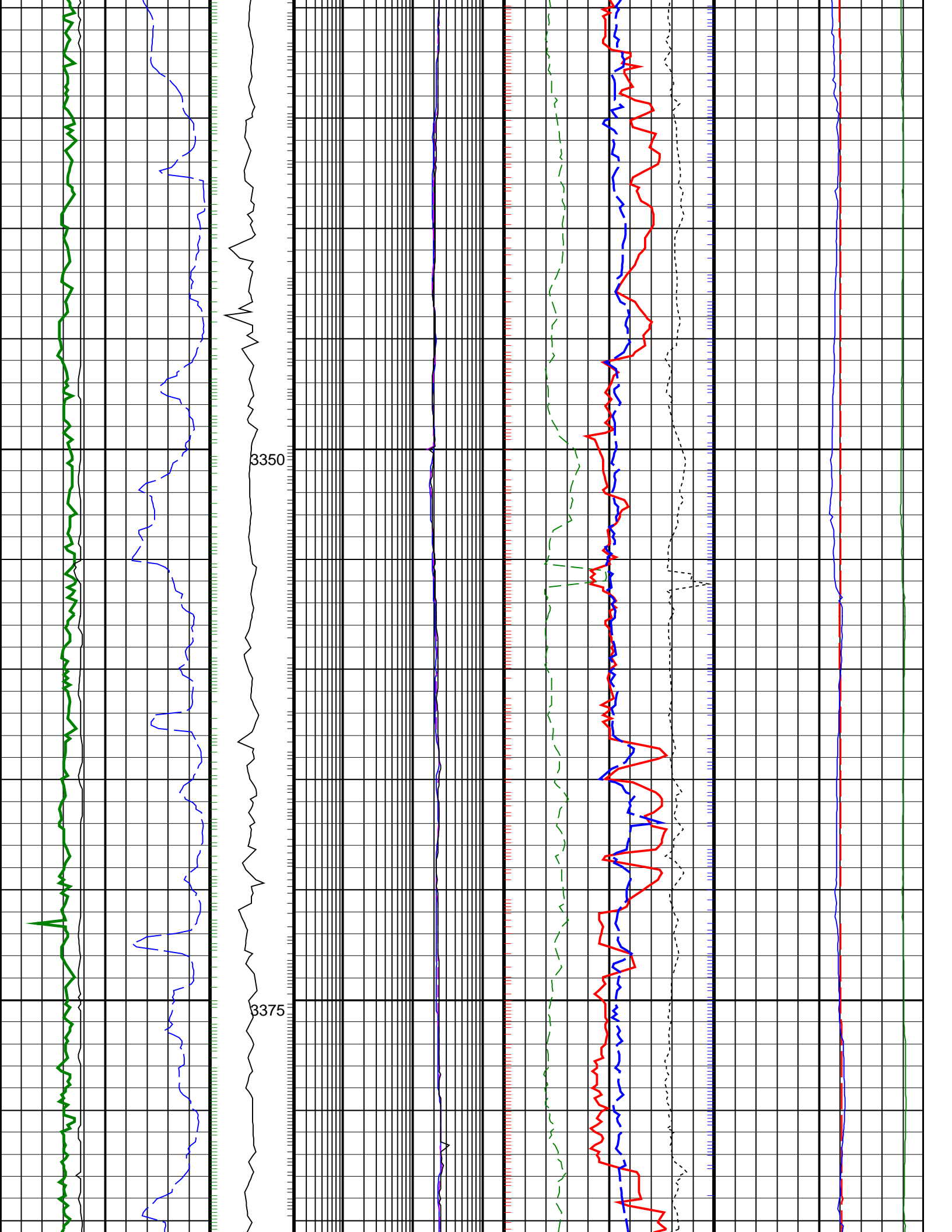


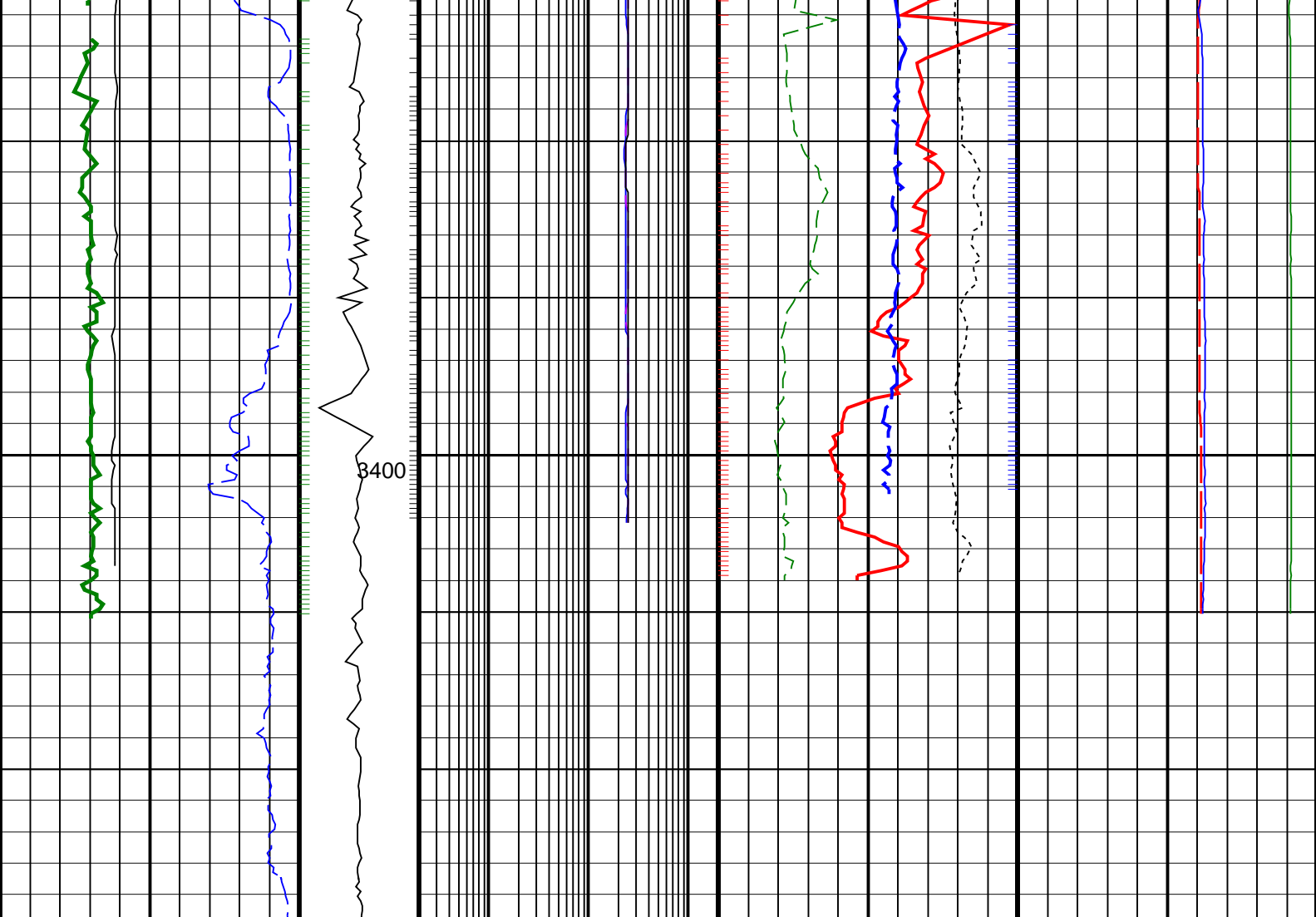












<div>ROP*5 (ROP5) (M/HR)</div> <div>2000</div>	<div>MWD Collar RPM (CRPM_RT) (RPM)</div> <div>0400</div>	<div>ARC Phase Shift Resistivity 16 inch at 2 MHz, Real-Time (P16H_ECO_RT) (OHMM)</div> <div>0.2200</div>	<div>Bulk Density, Bottom, Real-Time, Computed Downhole (ROBB_DH_ECO_ RT) (G/C3)</div> <div>1.852.85</div>	<div>Downhole Annulus Temperature, Real Time, Computed Downhole (DHAT_ DH_ECO_RT) (DEGC)</div> <div>0200</div>
<div>Ultrasonic Caliper, Average Diameter, Real-Time, Computed Downhole (UCAV_ DH_ECO_RT) (IN)</div> <div>616</div>		<div>ARC Phase Shift Resistivity 28 inch at 2 MHz, Real-Time (P28H_ECO_RT) (OHMM)</div> <div>0.2200</div>	<div>Photoelectric Factor, Bottom, Real-Time, Computed Downhole (PEB_DH_ ECO_RT) (G/C3)</div> <div>010</div>	<div>Bulk Density Correction, Bottom, Real-Time Computed Downhole (DRHB_DH_ ECO_RT) (G/C3)</div> <div>-0.250.25</div>
<div>Gamma Ray, Average, Real-Time, Computed Downhole (GRMA_DH_ECO_ RT) (GAPI)</div> <div>0200</div>		<div>ARC Phase Shift Resistivity 40 inch at 2 MHz, Real-Time (P40H_ECO_RT) (OHMM)</div> <div>0.2200</div>	<div>Thermal Neutron Porosity, Average, Real-Time (TNPH_ ECO_RT) (PU)</div> <div>45-15</div>	<div>Downhole Annulus Pressure, Real Time, Computed Downhole (DHAP_DH_ECO_ RT) (PSI)</div> <div>06000</div>
			<div>Equivalent Circulating Density, Real-Time (ECD_ ECO_RT) (LB/G)</div> <div>1015</div>	